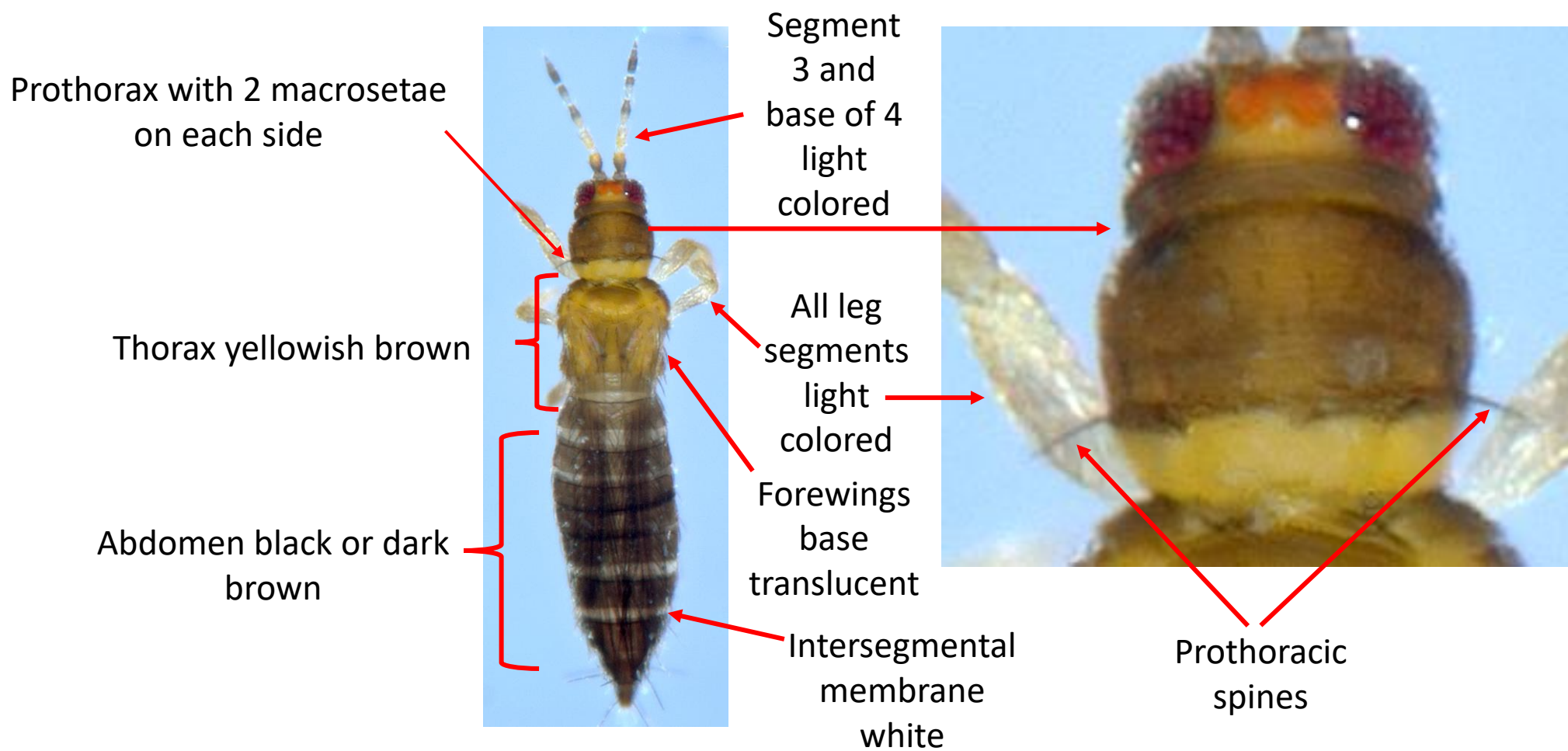


Thrips parvispinus Identification Aid

Features distinguishing adult female *Thrips parvispinus* from other similar looking thrips

1. Prothorax with macrosetae only on posterior margin (2 on each side)
2. Abdomen black or dark brown with white intersegmental membranes
3. Thorax yellowish brown and clearly lighter than abdomen
4. All legs segments light colored
5. Antennal segment 3 and base of antennal segment 4 lighter than segments 1-2



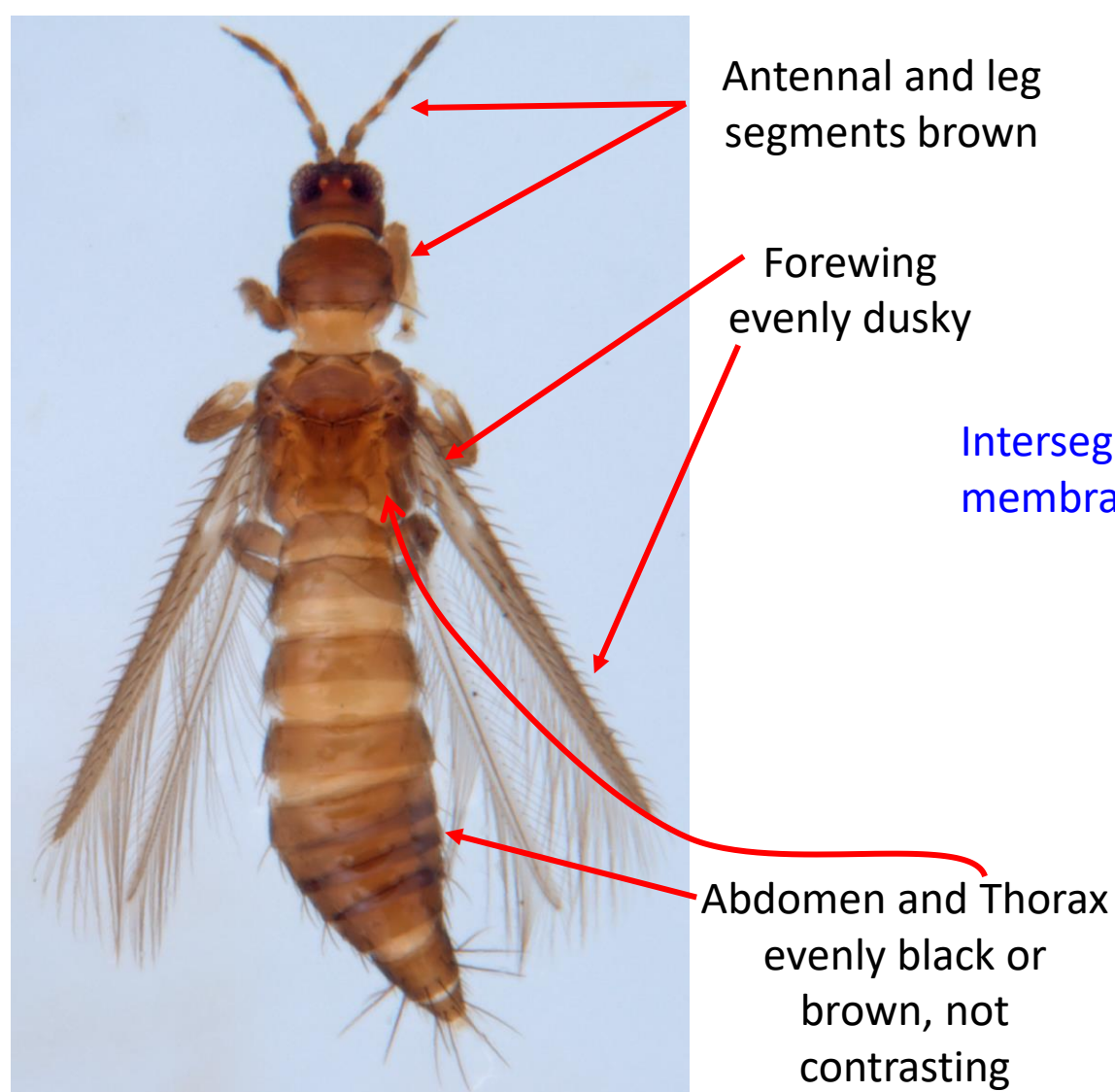
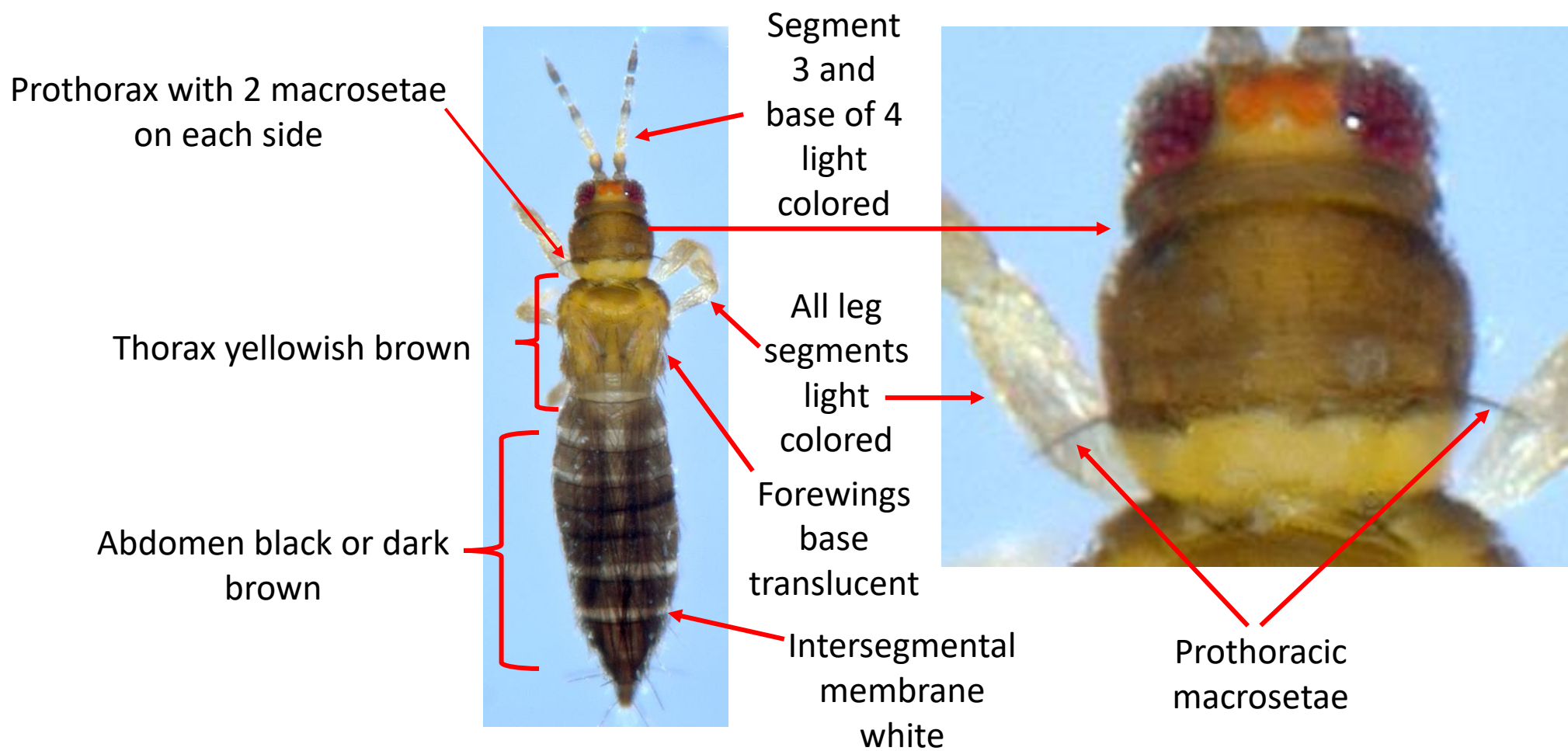
Diagnostic table to distinguish common species of dark thrips from female *Thrips parvispinus*

| Species/Character | Long Prothoracic Macrosetae | Thorax Abdomen Color | Abdomen Intersegmental Membrane | Fore Wing Color | Legs |
|---|--|--|---------------------------------|--|--|
| <i>Thrips orientalis</i> | 2 per side on posterior margin | not contrasting, evenly black or brown | white or light brown | evenly dusky | evenly brown |
| <i>Echinothrips americanus</i> | none | not contrasting, evenly brown | red | dusky with light colored or translucent base | evenly dark |
| <i>Caliothrips phaseoli</i> and <i>C. fasciatus</i> | none | not contrasting, evenly brown | white or yellow | background translucent with 2 dark bands | tarsi light colored, tibia and femora dark banded |
| <i>Frankliniella schultzei</i> | 3-5 per side; 1-2 on anterior and 2-3 on posterior margins | not contrasting, evenly brown | white | translucent | |
| <i>Frankliniella insularis</i> | 3-5 per side; 1-2 on anterior and 2-3 on posterior margins | not contrasting, evenly brown | white | dusky with translucent base | foretibia yellow, all other segments on all legs black |
| <i>Frankliniella occidentalis</i> | 3-5 per side; 1-2 on anterior and 2-3 on posterior margins | not contrasting, evenly brown | white | translucent | |

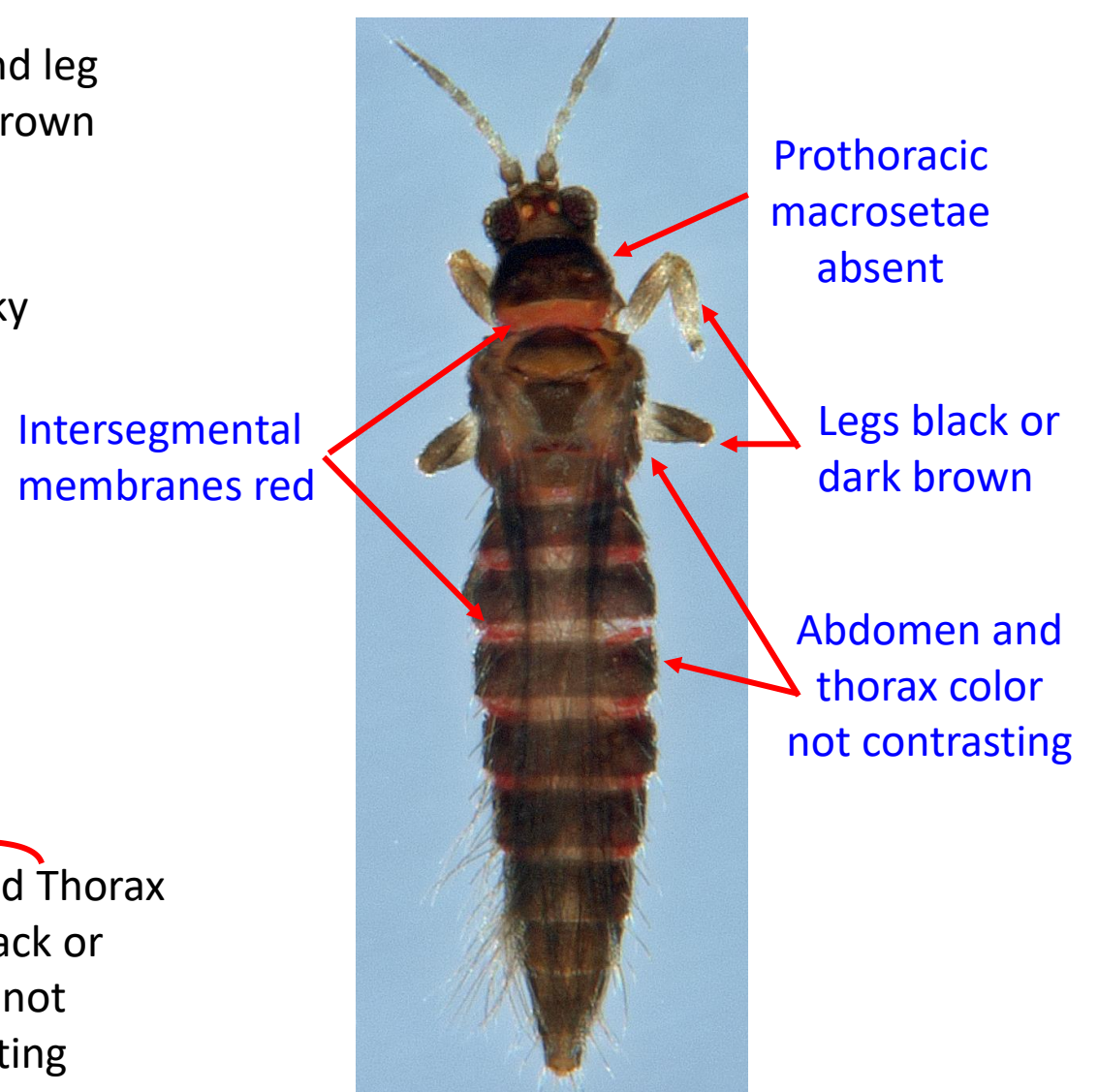
Thrips parvispinus Identification Aid

Features distinguishing adult female *Thrips parvispinus* from other similar looking thrips

1. Prothorax with macrosetae only on posterior margin (2 on each side)
2. Abdomen black or dark brown with white intersegmental membranes
3. Thorax yellowish brown and clearly lighter than abdomen
4. All legs segments light colored
5. Antennal segment 3 and base of antennal segment 4 lighter than segments 1-2



Thrips orientalis
on ornamentals

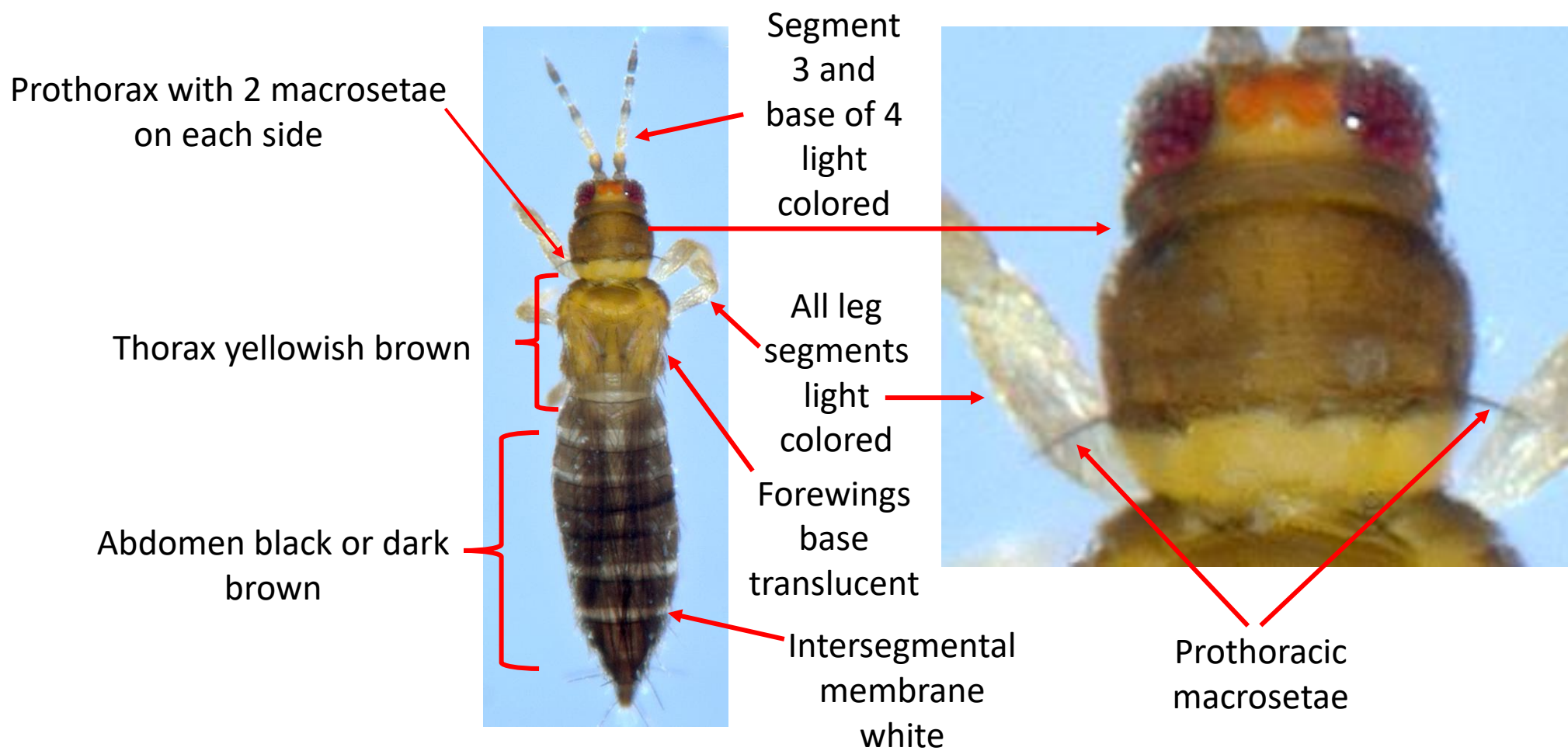


Echinothrips americanus
greenhouses and landscape

Thrips parvispinus Identification Aid

Features distinguishing adult female *Thrips parvispinus* from other similar looking thrips

1. Prothorax with macrosetae only on posterior margin (2 on each side)
2. Abdomen black or dark brown with white intersegmental membranes
3. Thorax yellowish brown and clearly lighter than abdomen
4. All legs segments light colored
5. Antennal segment 3 and base of antennal segment 4 lighter than segments 1-2



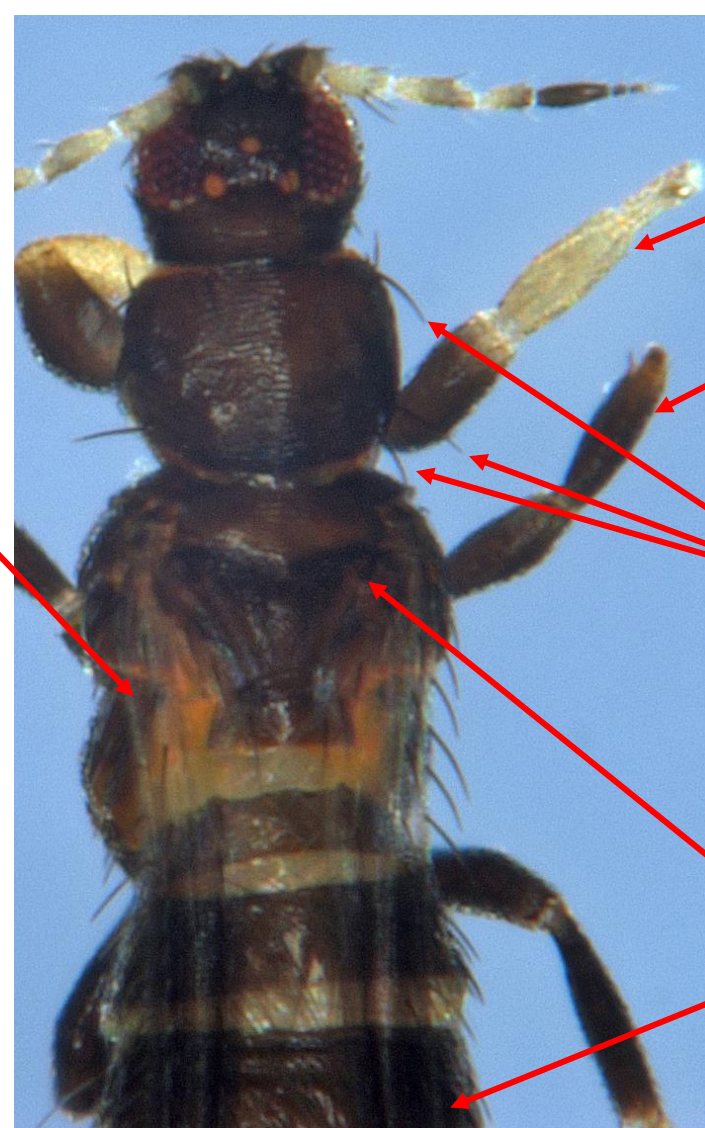
Prothoracic macrosetae absent

Leg segments banded

Thorax as black as Abdomen, not contrasting

Forewing with translucent base and 2 distal black bands

Caliothrips phaseoli
greenhouses and landscape



Forewings dusky with translucent base

Only foretibia light colored, other segments dark brown

Prothorax with macrosetae on anterior and posterior margins

Abdomen and thorax color not contrasting

Frankliniella insularis
landscape