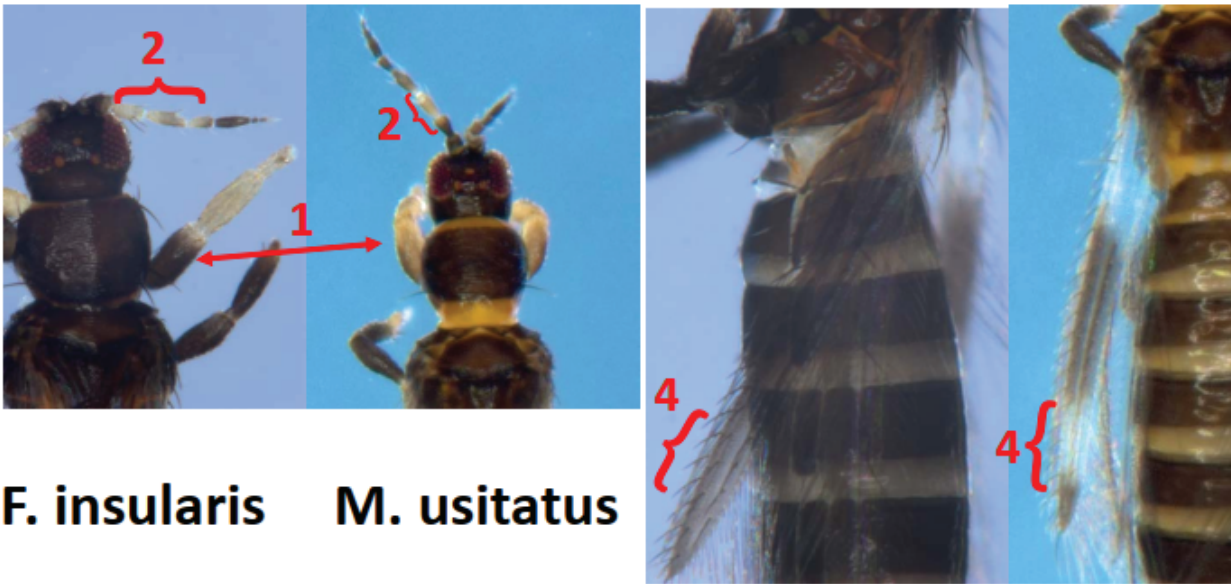
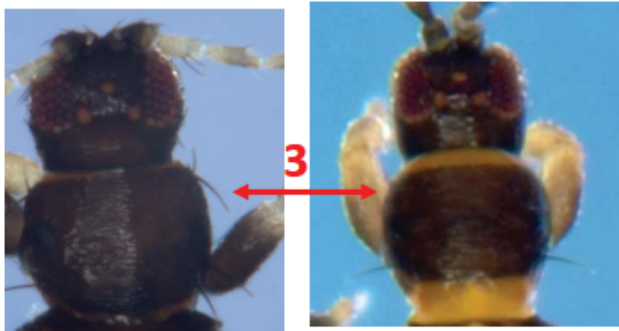


Megalurothrips usitatus Identification



F. insularis **M. usitatus**



F. insularis **M. usitatus**

Character Species	1. Fore femur	2. Light color Ant. segments	3. Prothorax long anterior setae	4. Wing distal light band
insularis	black	3-5	present	absent
usitatus	mostly yellow	3	absent	present

MEGALUROTHRIPS Bagnall, 1915

Superficially Similar Species: Females of *Megalurothrips* sp. may be confused with *Frankliniella insularis*, dark phase *Frankliniella occidentalis*, or with *Caliothrips* sp. But the genera can be easily distinguished by the characters presented in the table below.

Species/Characters	Forewing Anterior Vein Setae	Forewing Color	Th. 1 Sculpturing	Th. 1 Macrosetae	Ctenidia	Abd. 8 Anterolateral Microtrichia Field
<i>Megalurothrips</i> sp.	Row incomplete	Banded: 2 black and 2 white bands	Transverse, weak	3 (pm + 2pl)	Absent	Present
<i>F. insularis</i>	Row complete	Not banded: light base, evenly dusky beyond base	Transverse, weak	5 (am + al + pm + 2 pl)	Present	Absent
<i>F. occidentalis</i>	Row complete	Translucent	Transverse, weak	5 (am + al + pm + 2 pl)	Present	Absent
<i>Caliothrips</i> sp.	3 setae at most	Banded: 2 black and 2 white bands	Reticulate, well-marked	No outstanding setae	Absent	Absent